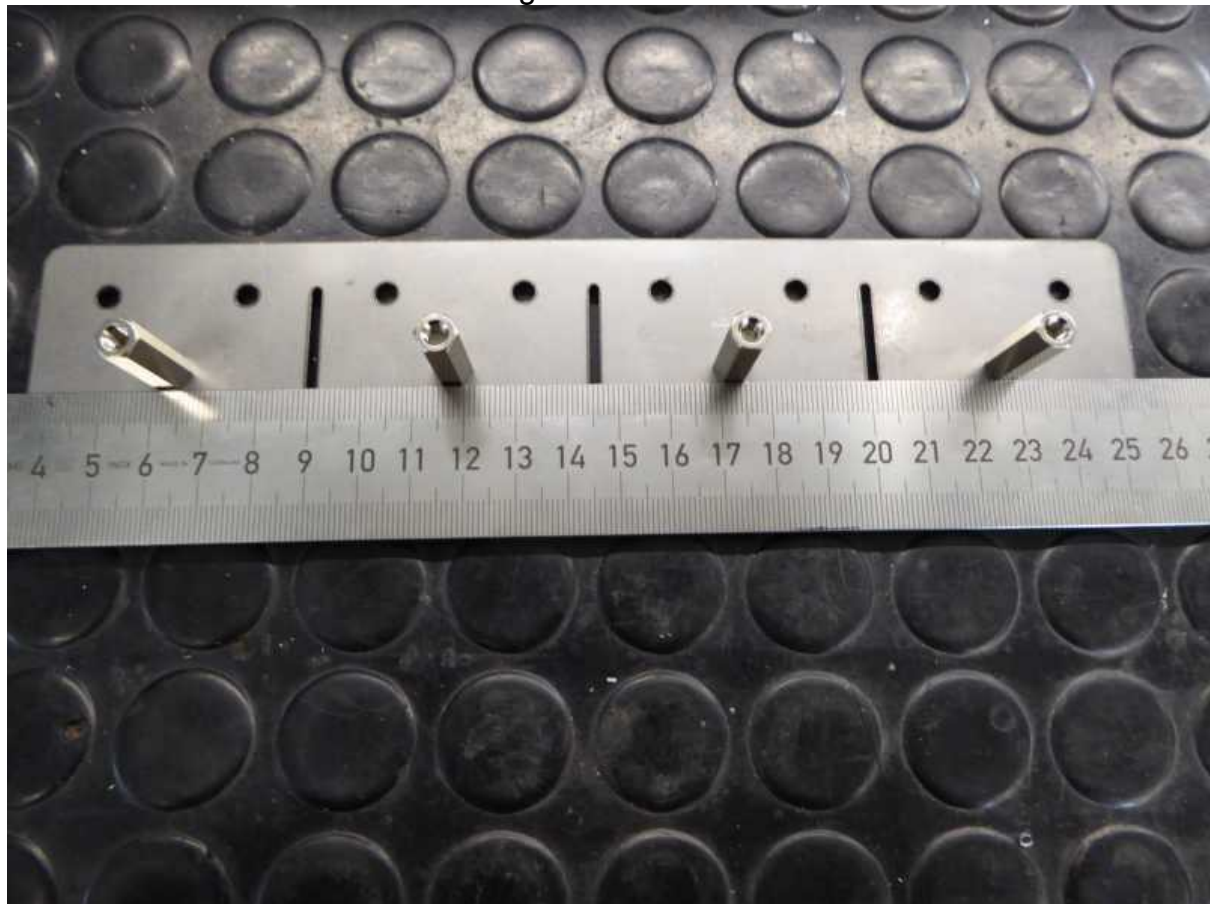


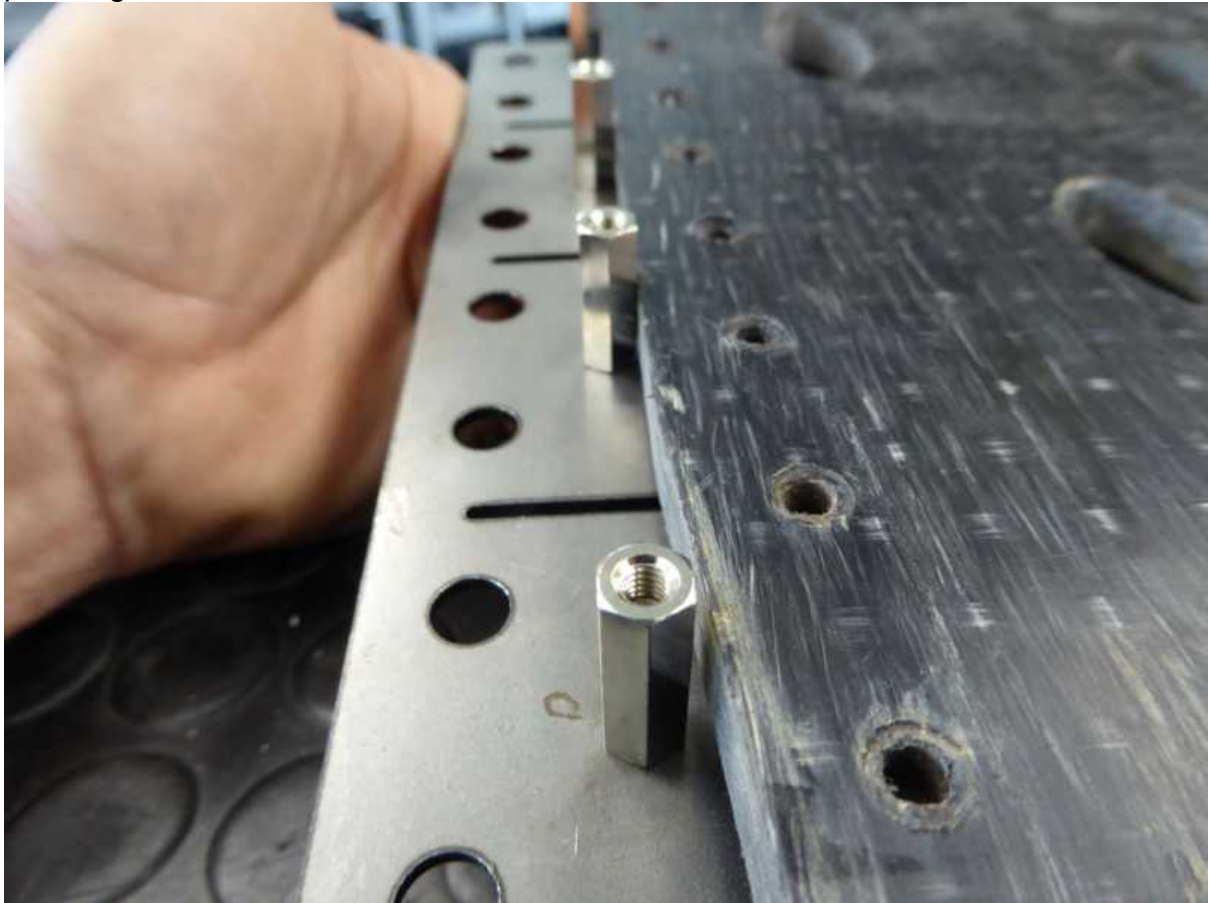
Make sure that the hex standoffs aligned with flat side to deck



Template is as long as all 4 Flaps together, you can use also for cutting griptape



press against the deck like this



don't do it this way, you want the longest possible straight edge

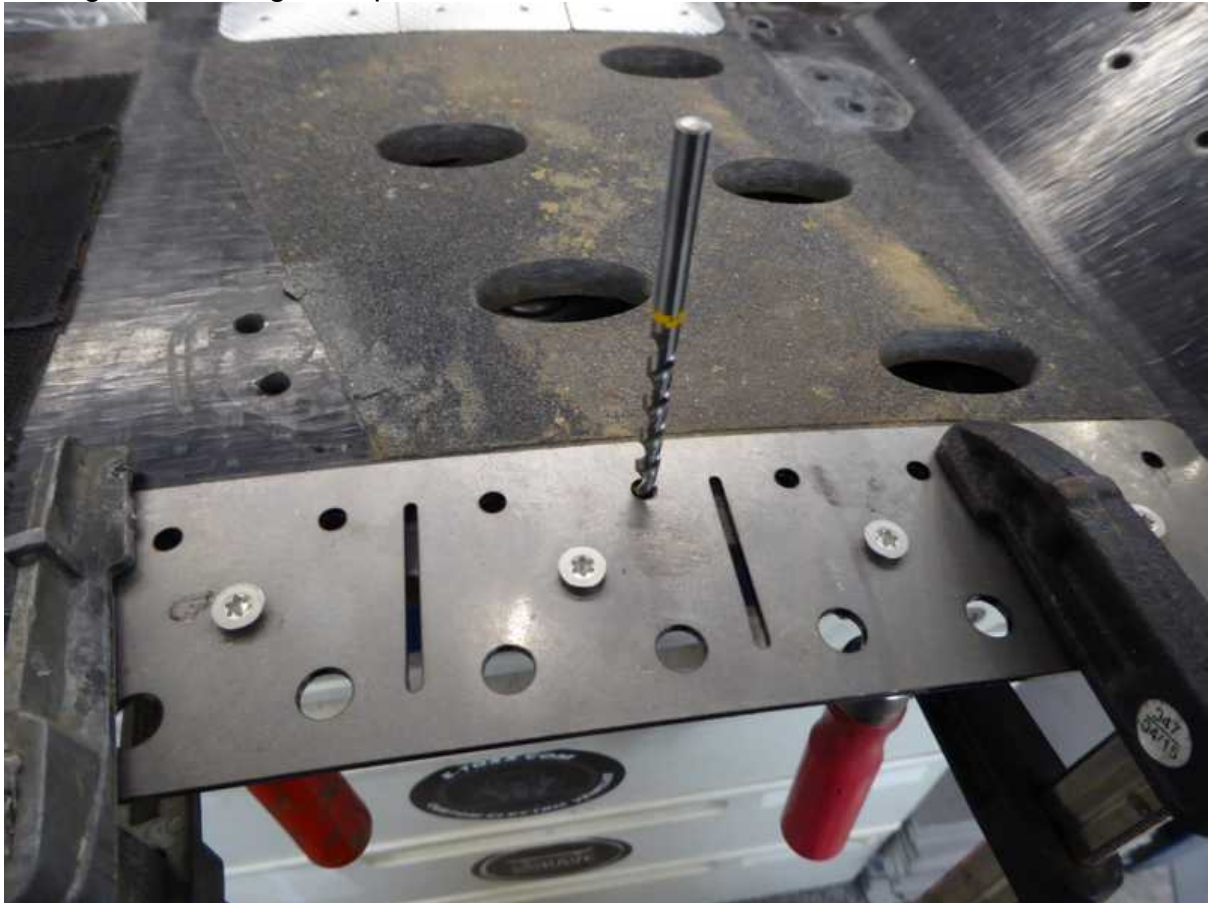




secure with grips



Drilling holes through complete deck



countersunk from upperside 5.5-6mm deep ...

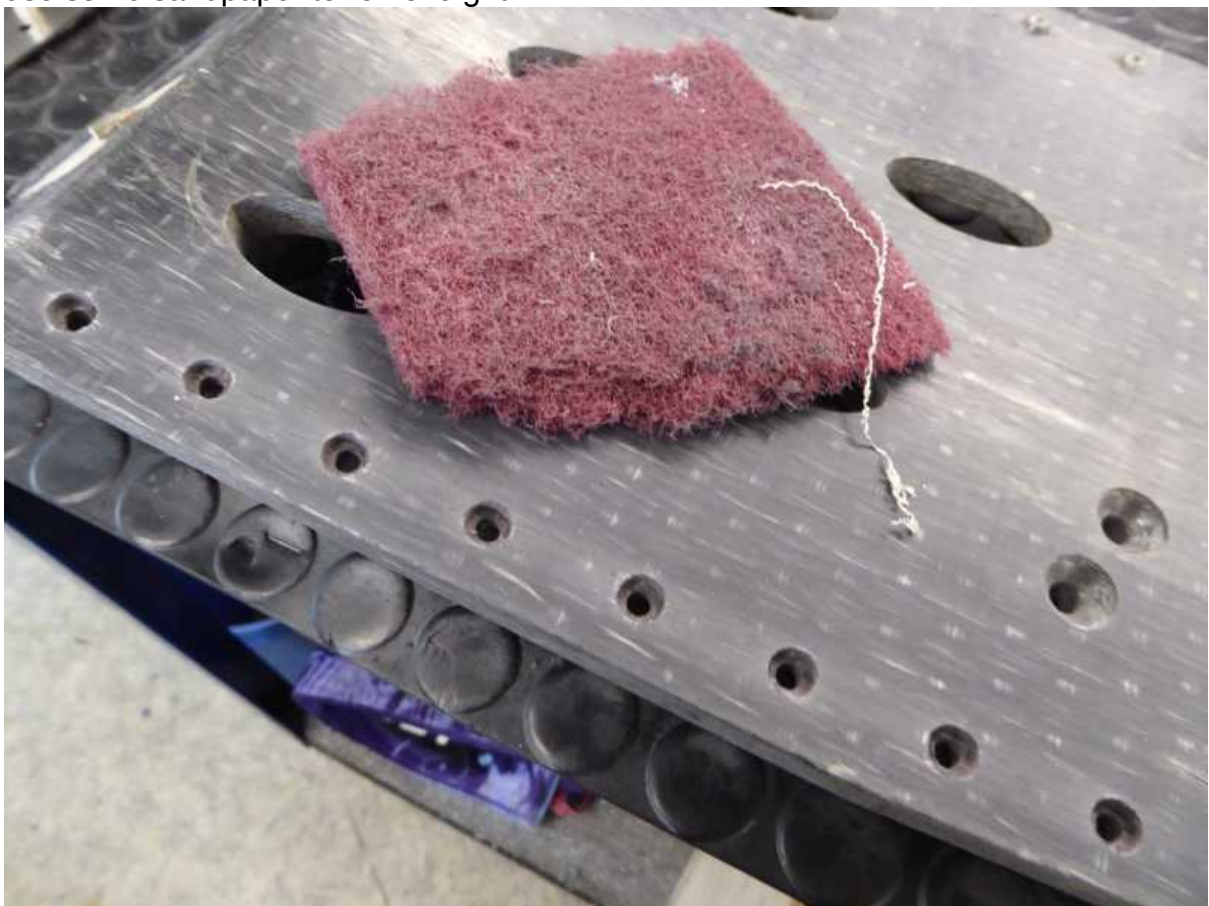




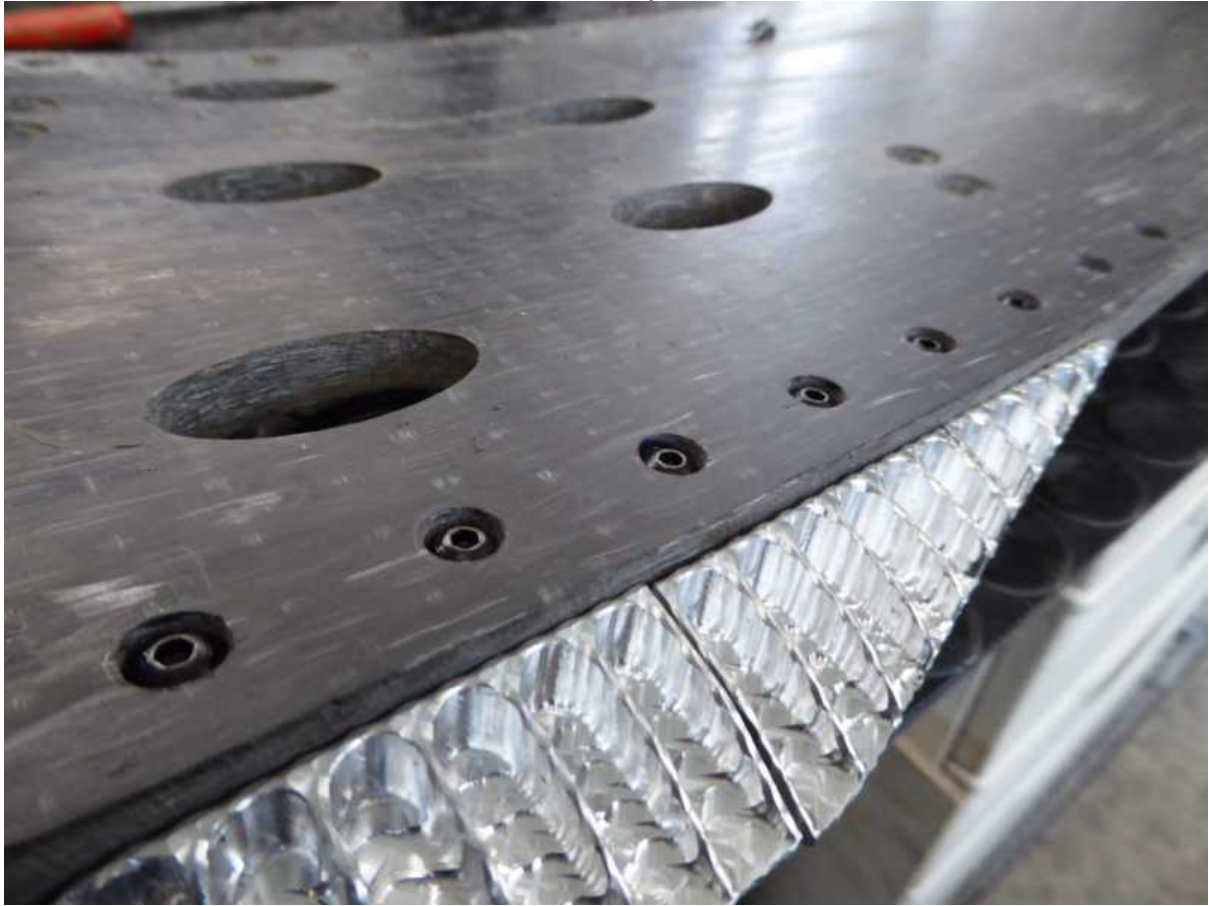
to make it easier you can make simple depth stop like this, piece of tube from underside (the side wich face the ground) drill 2mm deep



use some sandpaper to remove grit



use the Mx8 with Loctide 243 to mount the flaps



here mounted as short version with 3 parts





